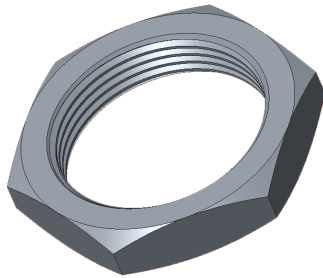


# PANEL MOUNTING NUTS

Technical specifications based on zinc

Dynacast panel mounting nuts deliver an inexpensive alternative to screw machined nuts. The patented single-thread design is cast as an integral part of the process cycle.



- Double chamfered hex patterns are available with all popular thread sizes
- All threads conform to UNE, UNEF, UNS & UNF standards and are in accordance with Unified Standard class 2B
- Rustproof, non-corroding. Will not gall or freeze on mating threads

Dynacast Part Number	Thread Type	Thread Size	Normal Thickness	Wrench Size	Approximate Ship Weight lbs/M
221 107	UNS	1/4 -40	.060	5/16	1.5
221 108	UNS	3/8 - 27	.062	1/2	1.5
221 109	UNF	3/8 - 24	.093	1/2	2.0
221 101	UNEF	3/8 - 32	.062	1/2	1.5
221 102	UNEF	3/8 - 32	.093	1/2	2.0
221 103	UNS	15/32 - 32	.078	9/16	1.5
221 104	UNS	15/32 - 32	.062	5/8	3.0
221 105	UNS	15/32 - 32	.078	5/8	3.0
221 106	UNEF	5/8 - 24	.084	3/4	3.5
221 110*	UNS	3/4 - 24	.125	7/8	6.5
221 111*	UNS	3/4 - 24	.156	7/8	8.8
221 112*	UNS	3/4 - 27	.156	7/8	8.8
221 115*	UNS	3/4 - 20	.125	7/8	6.5
221 121*	UNF	5/8 - 18	.156	3/4	7.5
221 123*	UNF	5/8 - 24	.156	3/4	7.5
221 125*	UNS	13/16 - 28	.250	1.00	20
221 127*	UNF	7/8 - 14	.250	1.00	17
221 128*	UNF	7/8 - 24	.156	1.00	12
221 124*	UNEF	1 - 20	.250	1.25	33
221 122*	UNS	1 - 27	.1875	1.25	25
*Tapped Threads					

Many sizes are available from stock or additional custom shapes and threads are available to meet your prints. We also offer many plating options to meet your requirements.

[www.dynacast-ip.com](http://www.dynacast-ip.com)

Please visit our website to request a quote